

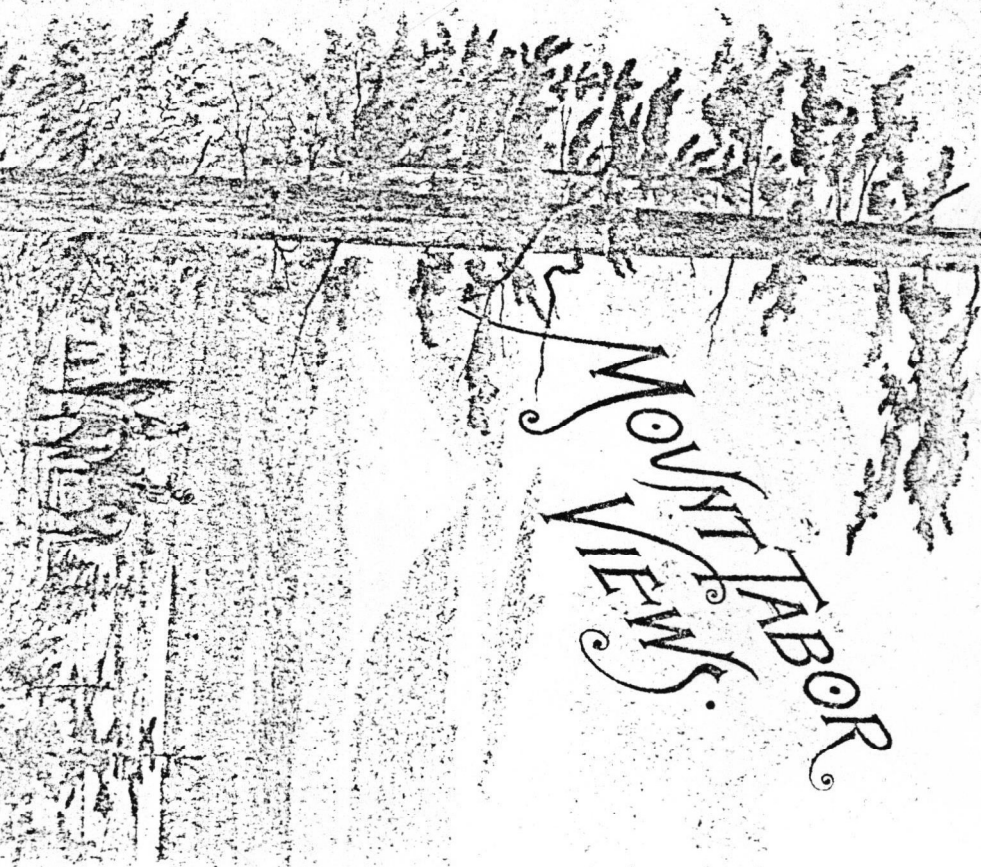
Portland from Mt. Tabor.
Looking Down The Base Line Road.

127
LITHO IN OREGON PRINT &

Mount Tabor Views.

View of Hood from Mt. Tabor.

PORTLAND, OREGON.

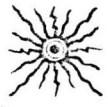




THIS SOUVENIR

IS PRESENTED TO THE PUBLIC
WITH THE COMPLIMENTS OF
THE FOLLOWING OWNERS OF
MOUNT TABOR PROPERTIES:

THE HART LAND COMPANY, - - 101 1/2 Third Street
CLAYTON & OLIVER, S. W. Cor. Third and Stark Streets
LADRIE ROYAL, Real Estate, 262 Stark Street, cor. Third
BUELL LAMBERSON, }
J. THORNTON ROSS, } Worcester Block, Third and Oak
C. E. & F. S. FIELDS, Real Estate, 129 Union Ave., Portland



Mount Tabor Views



SOUVENIR

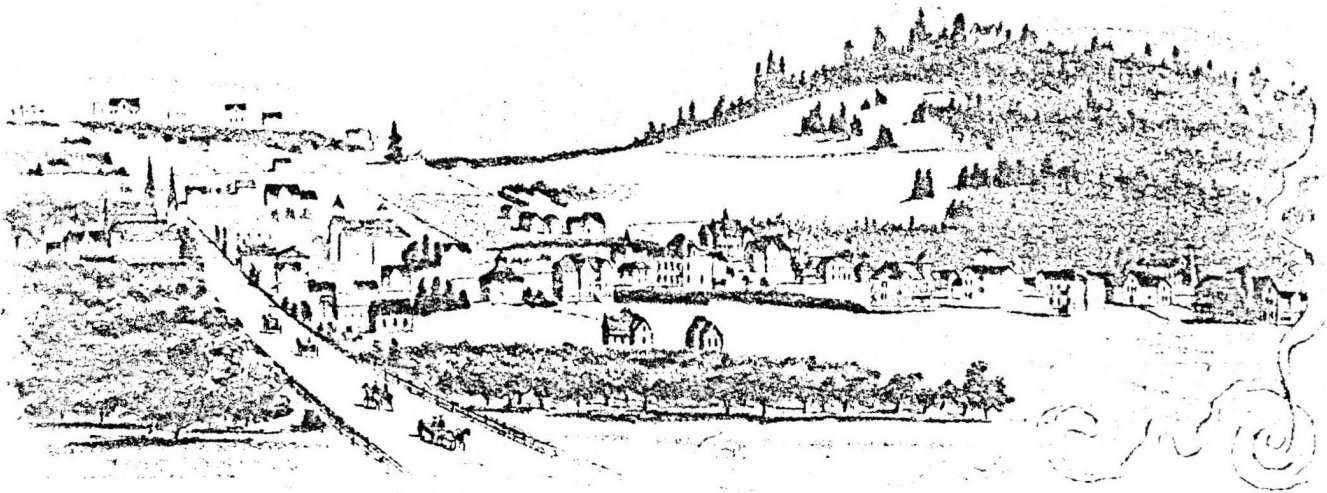
... OF ...

Portland's • Suburban • Queen.



PRINTED BY
THE LEWIS & DRYDEN PRINTING CO.
PORTLAND, OREGON
1892

MT. TABOR FROM THE WEST



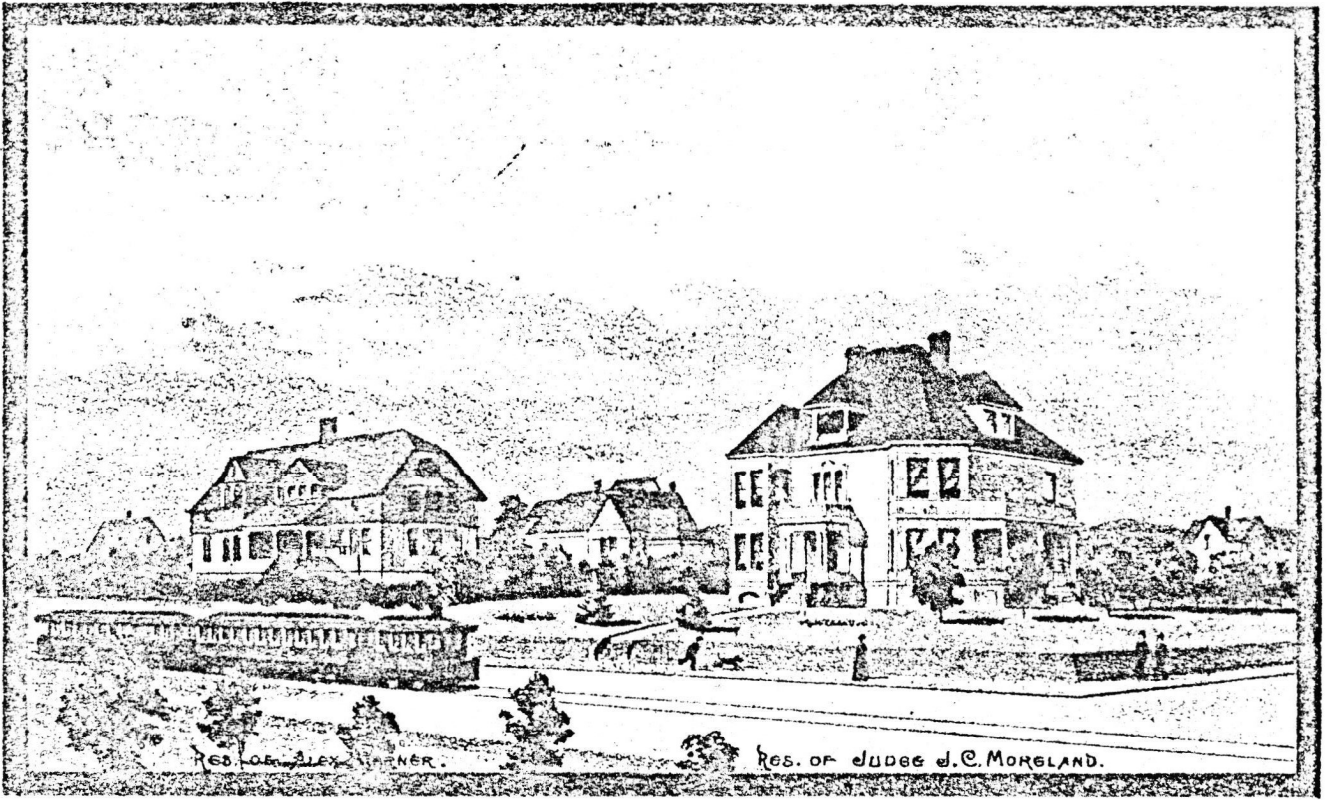
DESCRIPTIVE.

ALMOST every large city has some one location destined by nature to draw to itself the culture, wealth and taste that seek expression in the form of beautiful homes. Portland has Mount Tabor. For this purpose it is ideal. Rising up gently out of the lowlands to a height of 600 feet, with the city crowding up its western slope, as pictured on the opposite page, and with just enough natural wildness left, it is as fair an eminence as one could wish to see.

Long streets reach straight from the summit of Mount Tabor into the center of the city as illustrated by the view on the back cover of this book.

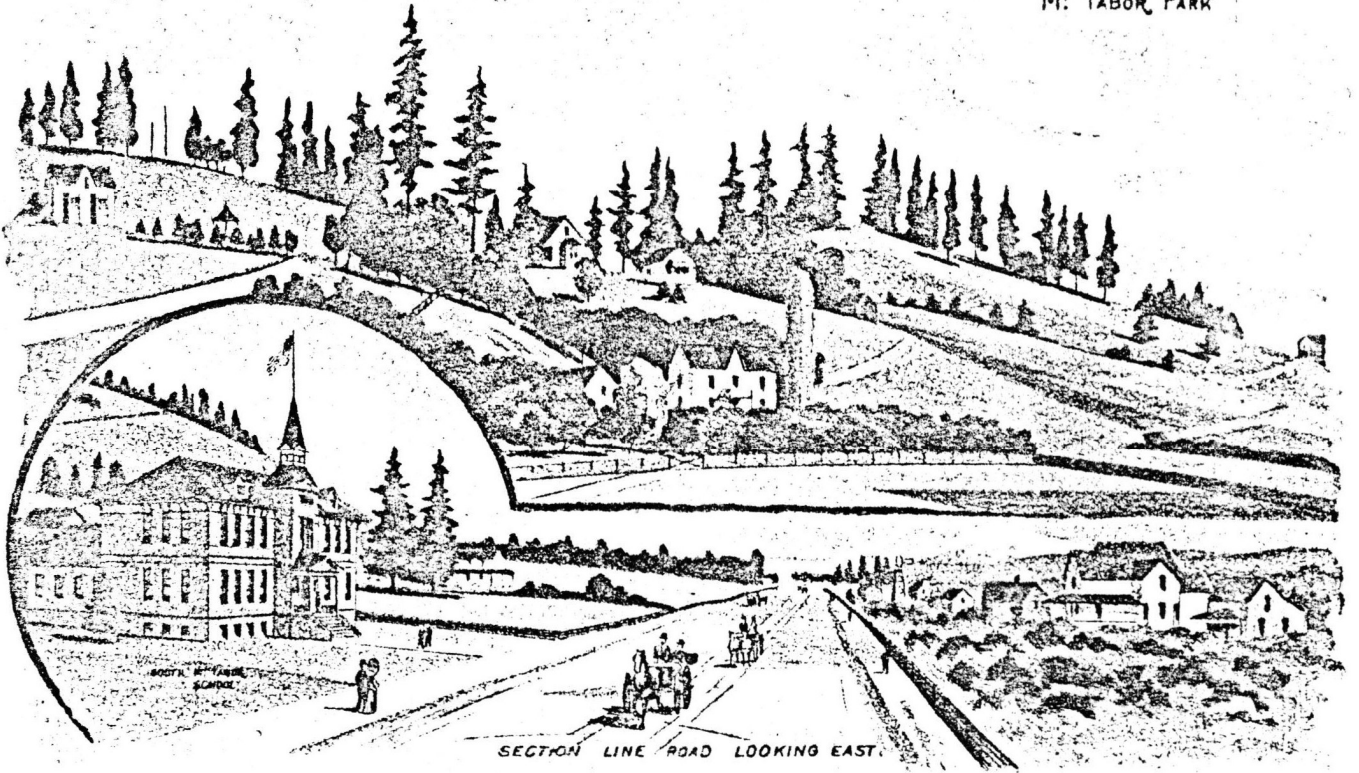
Mount Tabor is so located that all rapid transit systems running east through the city must reach it, as four have already. Mount Tabor is in the direction of Portland's most rapid growth. The lay of the land invites it. Less favorable surroundings in other directions compel it. Fate has decreed that every day shall add to the beauty, convenience and value of Mount Tabor homes.

This locality has always had a local fame for the best fruit and berries. It is above the line of early and late frosts, and above the fogs that so often cover the low lands.



PLATTING.

MOUNT Tabor has been intelligently platted. The slopes and summit are laid out in large lots and tracts varying from 100 feet square to several acres, according to the location of the ground, and all reached by winding drives and easy grades. These building sites are perfectly adapted to the wants of those who can afford to gratify a taste for elegant and picturesque homes. Many of the prominent citizens of Portland are among those owning choice sites here. Around the foot of the mountain and on the lower slopes are numerous desirable locations divided into ordinary building lots.



SECTION LINE ROAD LOOKING EAST

WEST MOUNT TABOR.

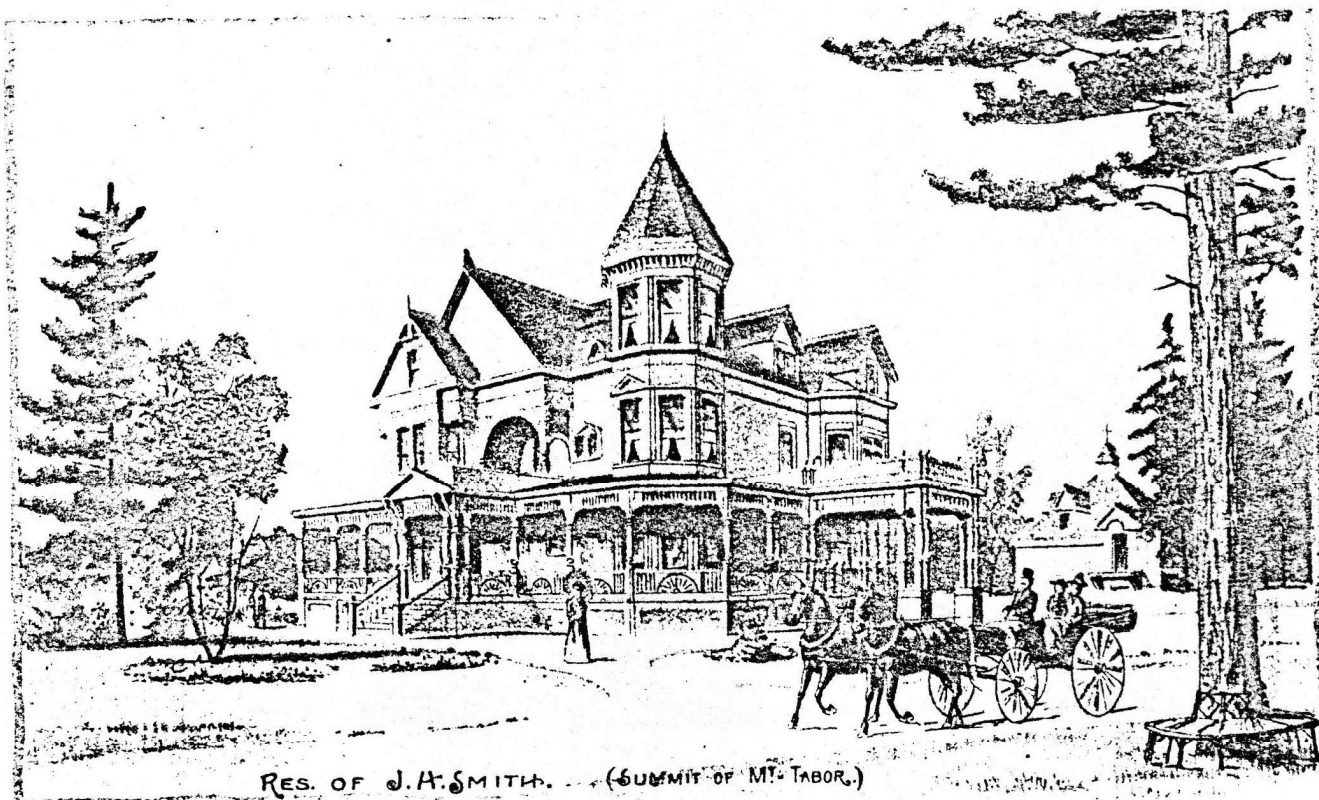
APPROACHING from the west after ascending a gentle slope, we reach what is commonly known as the "first bench," glimpses of which are shown on pages 4 and 19. The picture on the fourth page shows the first of the several car lines, three of which now afford comfortable and rapid 5 cent transit from early in the morning until late at night, to and from the heart of the city. This feature of numerous lines of rapid transit by steam and electric power has had more to do with popularizing Mount Tabor than any other item outside of the general high and slightly nature of the ground, and consequent special adaptation for homes.



SOUTH MOUNT TABOR.

PASSING around to the south (see opposite page), we are reminded of another feature that has been no unimportant factor in bringing Mount Tabor into favor; namely, the fact that the mountain rises out of an almost level plain, and has running in all directions a system of drives that makes the ownership of a team a positive luxury. Five minutes after leaving the highest point of the mountain, drives may be reached where the fleetest roadster can be speeded on smooth macadamized tracks.

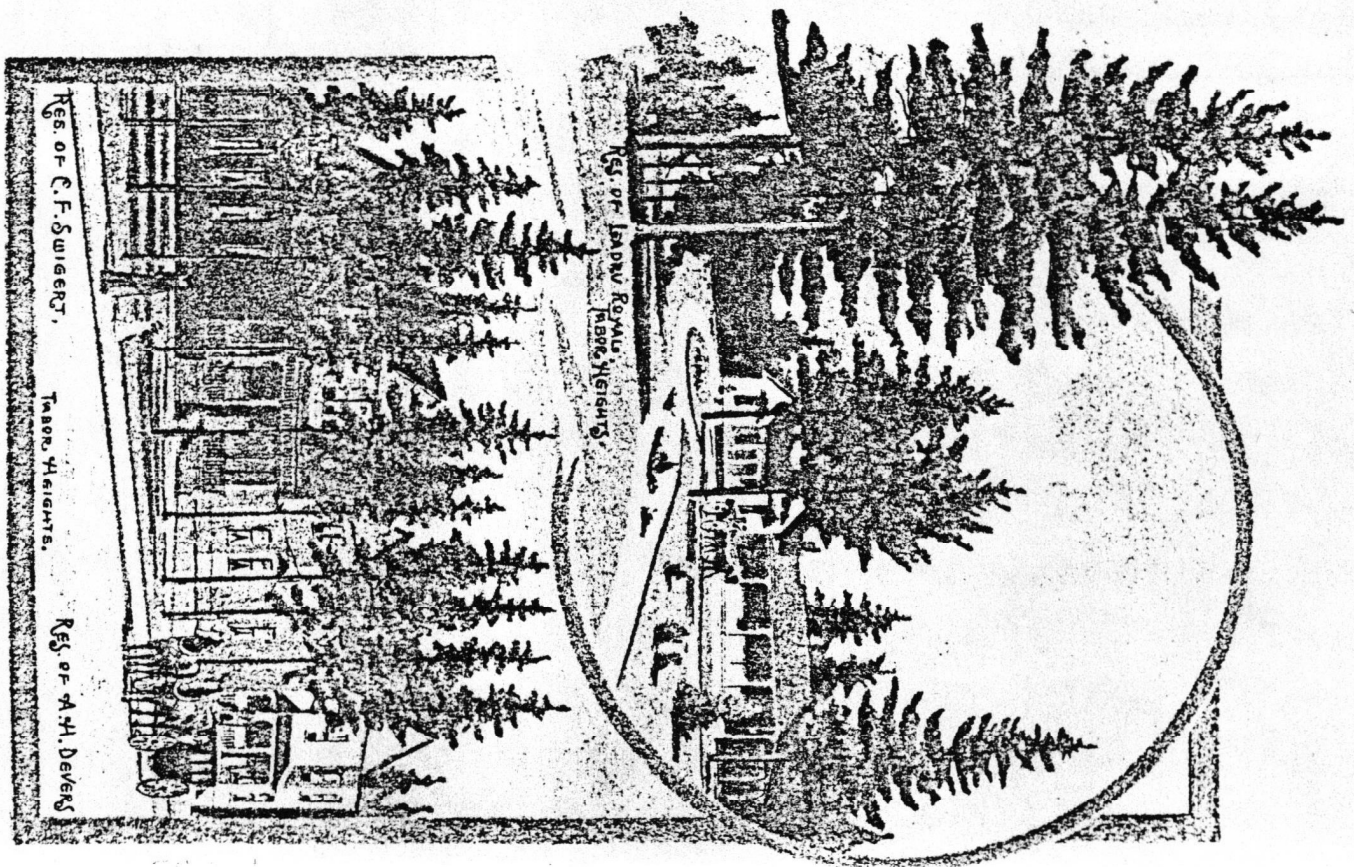
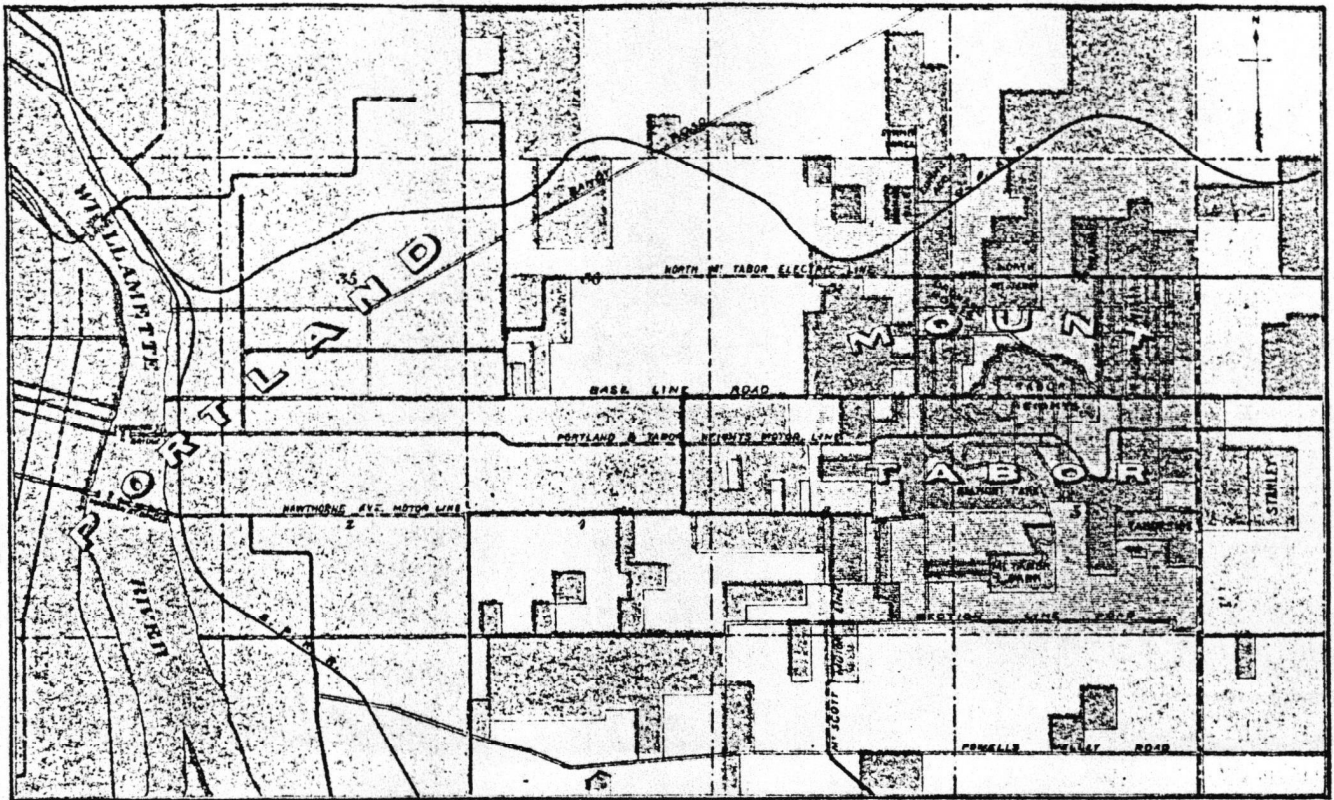




RES. OF J. A. SMITH. . . . (SUMMIT OF MT. TABOR.)

DRIVES.

THE best drive from Portland is over East Stark Street and its eastern extension, the Base Line Road, a macadamized street continuing due east many miles beyond Mount Tabor. The section line road and Hawthorne Avenue are good drives leading to South and Central Mount Tabor (see map page 10). Belmont Avenue, winding up to the plaza on the highest point of Mount Tabor (see page 8), is a delightful shaded drive. Branching off from Belmont Avenue to the left a little before reaching the summit, is Mount Tabor Avenue, leading along the east side of the mountain, and then south through Mount Tabor Park to West Avenue. The view on the front cover pictures one of the many charming spots found on this scenic drive.

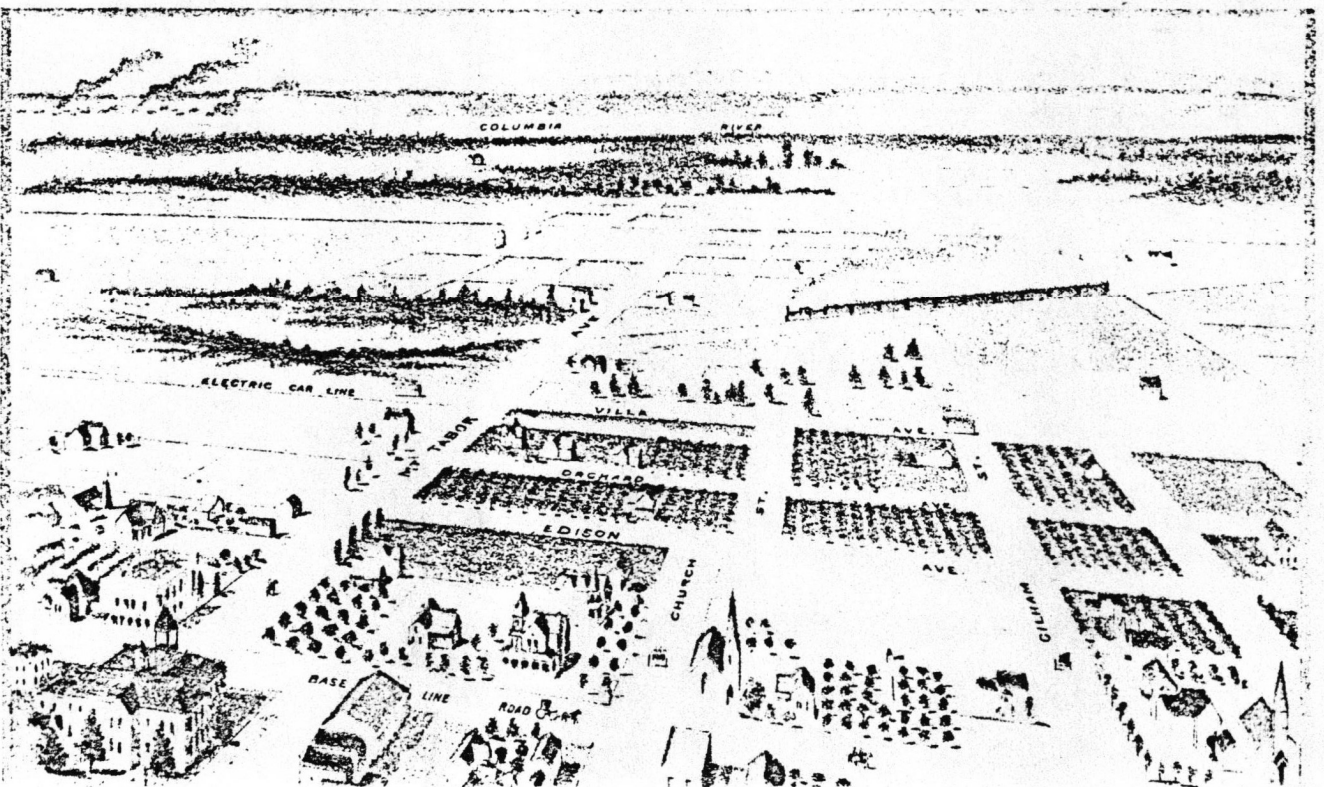


THE SUMMIT.

FROM the summit of Mount Tabor the eye is gladdened by uninterrupted views in all directions for a distance of from 50 to 100 miles.

This apex is occupied to some extent already by dwellings (see eighth page), from which a view can be had north, south, east and west, unsurpassed in all Multnomah County. From this standpoint can be seen the Cascade range from Mt. Jefferson to Mt. Rainier; the Columbia River from the Cascades west for 50 miles; the Willamette from the Falls at Oregon City to its confluence with the Columbia River, and the wide spreading city at ones very feet.

It is in such locations as this that one can well afford to expend a reasonable part of his wealth in securing a home that will ever be a source of pride and a safe retreat from the miasmatic influences of the lower ground.



TABOR HEIGHTS.

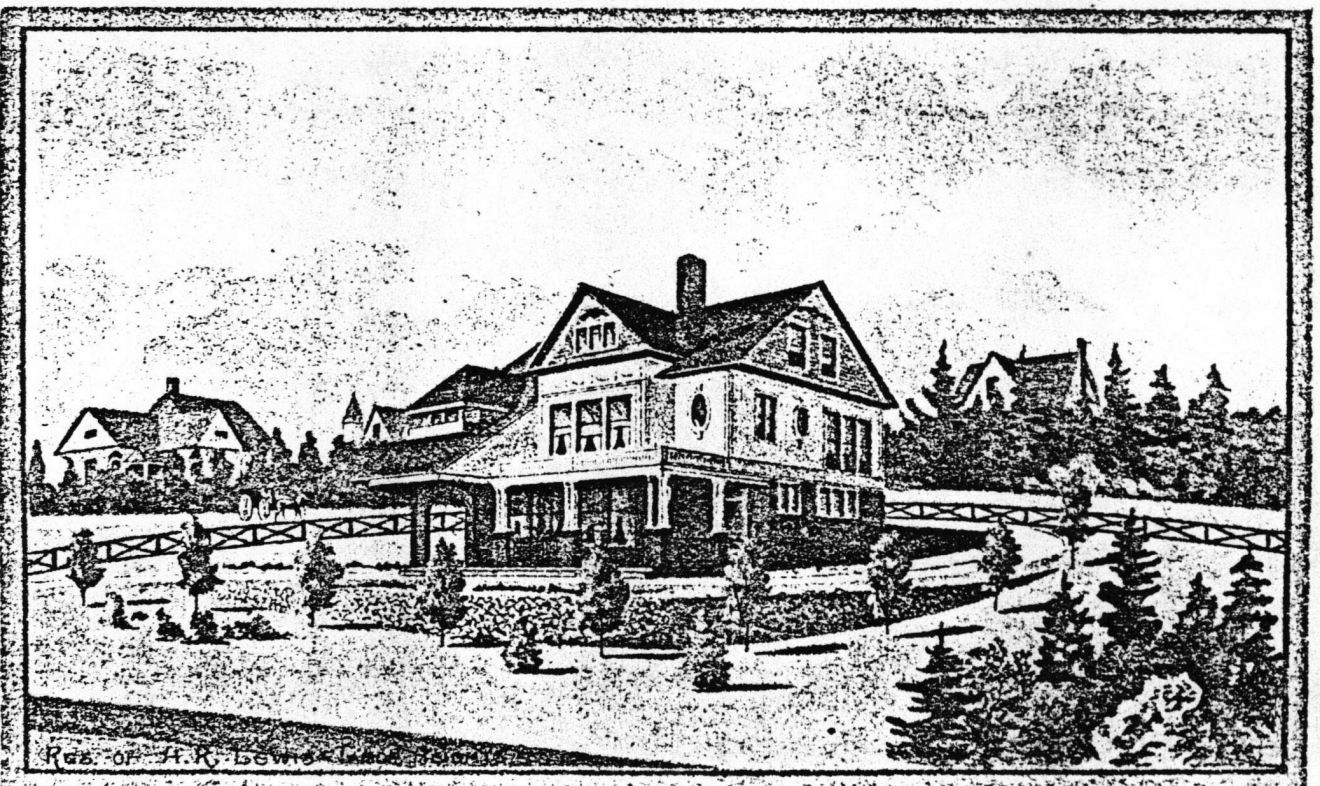
ON page 11 are two little sketches on the "North Bench," or "Tabor Heights," a general view of which is shown on page 2 at the left.

This particular portion of the hill up to the present, has been more eagerly sought for perhaps than any other location on the mountain.

It is over this bench that the motor line passes to reach the east side of the mountain and the valley beyond. On the west side of this part of the mountain is the town of Mount Tabor with its stores, shops, schools, etc.

To the northwest of Tabor Heights (as shown on page 13), is the Columbia River but three miles away, and beyond it, a hundred miles of dark fir forest, with the snow peak of Mt. St. Helens in its midst, forming a view as pretty as human eye ever rested upon.

The district pictured on the opposite page is reached by the Portland and North Mount Tabor electric line, and is building up rapidly.



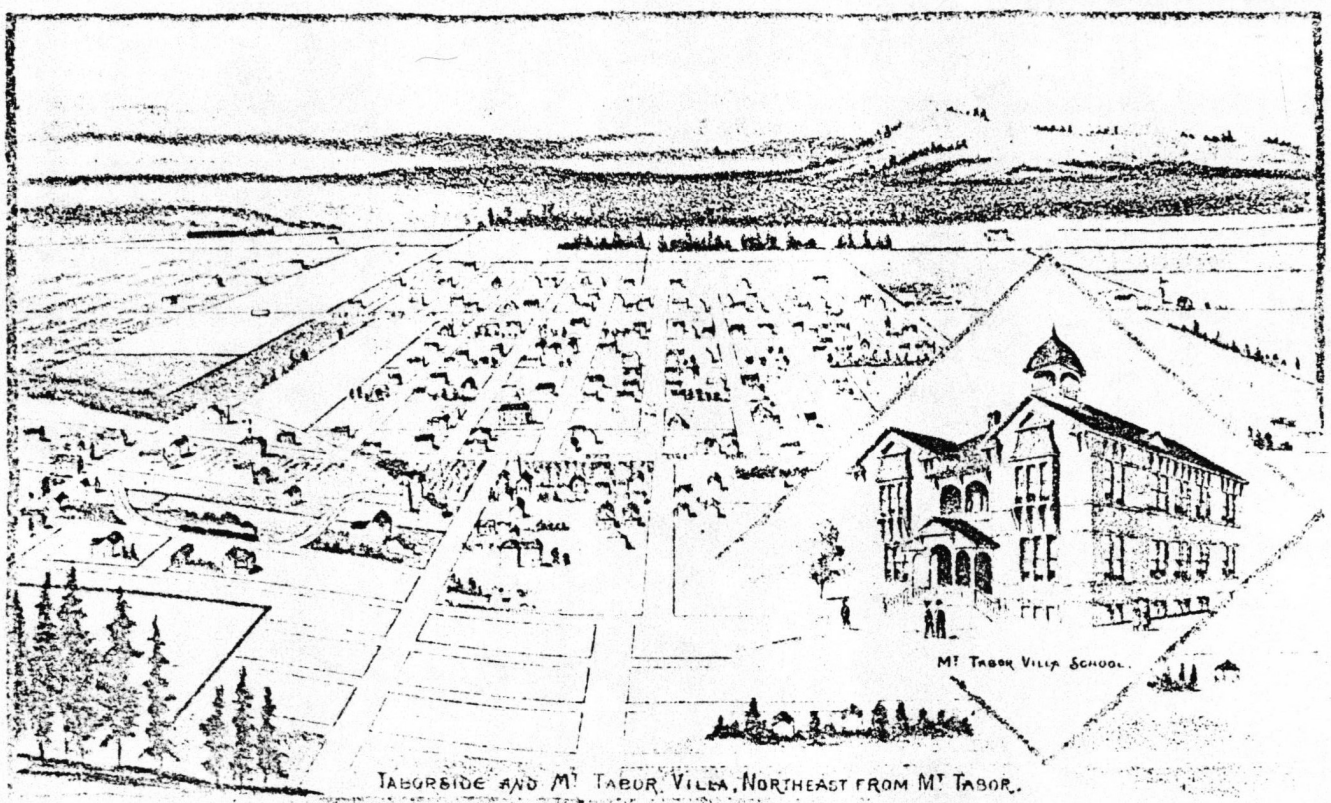


EAST VIEWS.

ON the east slope of the hill (page 150), long neglected on account of its being on the remote side from Portland, many of the finest homes are now appearing.

The outlook east, over a lovely valley some twenty miles in width, with its valleys and orchards, to the Cascade range of mountains beyond, crowned with snow peaks, is superb, and can not fail to bring this particular portion of the hill into more prominence every day.

Here, as elsewhere on Mount Tabor, the boomer has not yet come, and prices are comparatively low.



MOUNT TABOR VILLA AND ITS NEIGHBORS.

ON page 17 is illustrated the plain to the northeast, and beyond the mountain from Portland. Here can be seen some of the most rapidly improving suburbs of Portland.

Homes recently erected or now building, meet the eye in every direction, and give a stranger at a glance, an idea of the rapidity with which Portland is spreading.

Here are now hundreds of homes, well filled schools, and buildings costing from a few hundred dollars to \$10,000, where a short two years ago was a dairy ranch. This region is reached by two car lines, the Portland and North Mount Tabor (electric) and the Morrison Street Motor line.

Not only have Mount Tabor Villa and its neighbors grown in these two years past, but all around the base of Mount Tabor improvements have sprung up like magic, until it has come to be fairly in the midst of the city.



WATERWORKS

This water supply is the first problem to be met and solved in a new suburb, particularly in one that is reaching out for a class of residents who demand all the comforts of a well regulated home and who fear the inconveniences and uncertainties of a city. Fully realizing this, the owners of Mount Tabor property, in the spring of 1930, united in a movement to obtain a water supply that could be depended upon. The result was the formation of the Mount Tabor Light and Water Company, which after an outlay of \$25,000 has succeeded in furnishing an abundance of water of a quality not surpassed in any part of the world.

In closing, attention is called to the fact that all the views in this concern are from photographs or sketches taken on the spot, and show Mount Tabor as it exists today. What the future of Mount Tabor will be, we leave to your imagination.

With beautiful homes, green lawns, lawns, fountains, and all the winding roads, Mount Tabor will ever be as new, Portland's Suburban Queen.

N. B.

Our entire business consists of selling property on the slopes of Mount Tabor and the plain immediately adjoining.

\$500

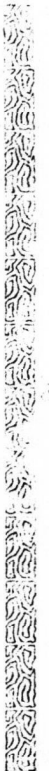
UPWARDS will purchase on easy terms, a homestead on the hill for a king.

\$100

UPWARDS, on terms of five per cent. cash and five per cent. per month, without interest or taxes, is the price we ask for lots adjacent to Mount Tabor, well served with WATER, STORES, SCHOOLS, and POLICES and MOTOR SERVICE, with five-cent fare to the city. INVESTIGATE! Respectfully solicited.

The Hart Land Co.

101 Third Street
Portland, Oregon



WATERWORKS

The water supply is the first problem to be met and solved in a new suburb, particularly in one that is reaching out for a class of residents who demand all the comforts of a well regulated city and who fear the incursive vicissitudes and uncertainties of a rural life.

Early realizing this, the owners of Mount Tabor property in the spring of 1889, united in a movement to obtain a water supply that could be depended upon. The result was the formation of the Mount Tabor Light and Water Company, which after an outlay of \$25,000 has succeeded in furnishing an abundance of water of a quality not surpassed in any part of the world.

In closing, attention is called to the fact that all the views in this souvenir are from photographs or sketches taken on the spot, and show Mount Tabor as it exists to-day. What the future of Mount Tabor will be, we leave to your imagination.

With beautiful homes, green lawns, flower gardens, and lovely winding roads, Mount Tabor will ever be as new, Portland's Suburban Queen.



N. B.

Our entire business consists of selling property on the slopes of Mount Tabor and the plain immediately adjoining.

\$500

UPWARDS will purchase on easy terms, a homestead on the hill for a Kluge.

\$100

UPWARDS, on terms of five per cent. cash and five per cent. per month, without interest or taxes, is the price we ask for lots adjacent to Mount Tabor, well served with WATER, STORES, SCHOOLS, and BATHS and MOTOR SERVICE, with five-cent fare to the city.

INVESTIGATIONS respectfully solicited.

The Hart Land Co.

101 Third Street
Portland, Oregon